



SACRAMENTO  
INTERNATIONAL  
AIRPORT

SacAirports.org



## LEEDing THE WAY

Central Terminal B is designed to comply with silver-level guidelines developed for the U.S. Green Building Council's Leadership in Energy and Environmental Design (LEED) certification program. The prestigious designation recognizes adherence to stringent criteria for sustainable building performance.

# First Flight

BY JANET FULLWOOD

If first impressions are everything, Sacramento International Airport's new Central Terminal B is a soaring success.

Almost a million passengers a month pass through Sacramento International, which handles an average 158 flights by 11 major carriers each day. Central Terminal B is designed to streamline the passenger experience, provide for future expansion and reflect the landscape and culture of Sacramento and the Central Valley.

Fresh from an extreme \$1.03 billion makeover, the once sleepy airport serving a growing, seven-county region of Northern California is ready for its 21st-century close-up. Whether you're an airline passenger or a local resident transporting someone who is, you'll find lots to admire in the pair of gleaming, glass-sheathed structures that on October 6 replaced the 44-year-old Terminal B and became an architectural icon for California's capital.

Architects developed more than 50 concepts for a new terminal before settling on the two-building design and starting construction on what came to be dubbed the "Big Build." The pair of buildings connected by an automated people-mover tram system represents the biggest capital improvement project in the history of Sacramento County.



ACORN STEAM BY DONALD LIPSKI /  
DESIGN FOR EPOXY RESIN, ALUMINUM,  
POLYURETHANE FOAM, ACRYLIC PAINT  
AND SWAROVSKI CRYSTAL CHANDE-  
LIER / CONCOURSE





"It was a long time coming," says lead landside terminal architect John Mares of Corgan Associates, the Dallas-based architectural firm that worked for a decade to design and build the complex.

Unlike the old Terminal B, the new Central Terminal B is not just another big box. The soaring, atrium-centered interior of the landside terminal is flooded with natural light that underscores the architects' intent to bring the outdoors in. Those horizontal, fins on the exterior of the building's glass skin are not just design elements, but functioning

solar shades designed to reduce glare and block the low-angle rays of the winter sun.

Many architectural features in the interior are designed to impart a sense of place, however subliminal. The structural columns tied to the roof with x-braces, for example, "are intended to mimic the trees lining the streets of the city," says Mares, while the symmetrical arcs of the roofline "are analogous to the Coastal Range and the Sierra."

A standout feature of the new terminal is the terrazzo flooring laid out in colors and patterns inspired by the Central Valley's agricultural fields and rivers. Even the ceiling conveys a sense-of-place aesthetic: it's made from strips of maple alternating with strips of redwood reclaimed from a century-old bridge linking Sacramento and San Joaquin counties.

One of the best features of Sacramento's newest architectural landmark is that passengers can admire it from afar as well as from within. A nine-acre "viewing park" landscaped with drought-tolerant plants and laced with walking paths provides a place for visitors to stand back and absorb the terminal's architectural punch. The building as a whole is also visible in all its architectural glory from the terminal's two-level approach roads.

"It's a unique feature of this facility," says Mares. "At most airports you pull up and never get to experience the architecture. Here it's a nice approach, an 'aha!' view."

From a user standpoint, Central Terminal B offers a streamlined and efficient passenger experience, starting with the split-level design that allows drivers to drop off departing passengers on the upper (ticketing) level and pick them up outside the baggage-claim area on the ground floor.

Inside, passengers will find ticket counters arrayed in an island format instead of being lined up against the wall, with each airline's facilities



UNTITLED BY LAWRENCE ARGENT / FIBERGLASS REINFORCED PLASTIC, STEEL, POLYMER AND CONCRETE RABBIT STRUCTURE / TICKET HALL



PHOTOGRAPHY BY GINO CREGLIA, JOHN SWAIN AND ARTWORK COURTESY OF THE SACRAMENTO METROPOLITAN ARTS COMMISSION



## NEAT TO KNOW



→ Airline passengers can go to any Central Terminal B kiosk to print a boarding pass and proceed to the people-mover and security checkpoint. Those with baggage to check must still go to their respective airline's counter.

→ Departure-gate lounges in the new airside terminal feature pods of family-friendly "cluster seating" that accommodate laptop users with one electrical outlet for every pair of chairs.

→ Free Wi-Fi is available in public areas throughout Sacramento International Airport.

→ Baby changing stations are located in all restrooms in Central Terminal B.

→ Picking up passengers? Look for signs directing you to the "free waiting area," a parking lot where drivers can linger at no charge until their party notifies them via cell phone that they have arrived.

→ Peak period for most airlines at SMF is 4:30 a.m. to 10:00 a.m. Allow extra time for parking, ticketing and screening if scheduled to fly during these hours.

→ When the old Terminal B is demolished, some of the debris will be salvaged, ground up and incorporated into paving materials for new airport roadways.

equally accessible from curb and elevators. Virtualized Common Use Terminal Equipment stationed throughout the circulation nodes allows passengers to print boarding passes at any kiosk regardless of which airline they're flying. Those with boarding pass in hand proceed to the people-mover boarding area, where 64-passenger cars depart every few minutes for a 45-second ride to the departure gates located in a separate, airside terminal.

The T-shaped airside facility, which houses 19 departure gates and the majority of Central Terminal B concessions, continues the sense-of-place architectural theme with a wavy roof, lots of glass and indirect lighting intended to be easy on waiting passengers' eyes.

"We're hoping our architecture will be intuitive enough that people won't spend a lot of time looking for signage," says Bryan Leavitt, Corgan's design manager for the airside portion of the Central Terminal B complex.

Upon emerging from the people-mover, passengers process through security checkpoints outfitted with state-of-the-art scanning equipment and emerge into a concourse that measures a quarter-mile long from end to end. Departure-gate waiting areas are furnished with pods of family-friendly "cluster seating" along with traditional rows. Laptop users will be pleased to note that free WiFi is available throughout the concourse and that electrical outlets are provided at about 50 percent of seats.

The ringer: There's more to do while waiting for a flight than cruise the Internet and catch up on email. Airport officials selected Central Terminal B concessionaires through a long and competitive process, making sure plenty of Sacramento-based vendors were included in the mix. As a result, retail outlets feature national brands such as Brookstone, Starbucks and Volo alongside locally-based names such as Visions of Eden, Experience Sacramento, Jack's Urban Eats and Cafeteria 15L. A new branch of downtown Sacramento's Esquire Grill offers sit-down table service and a seasonal menu.

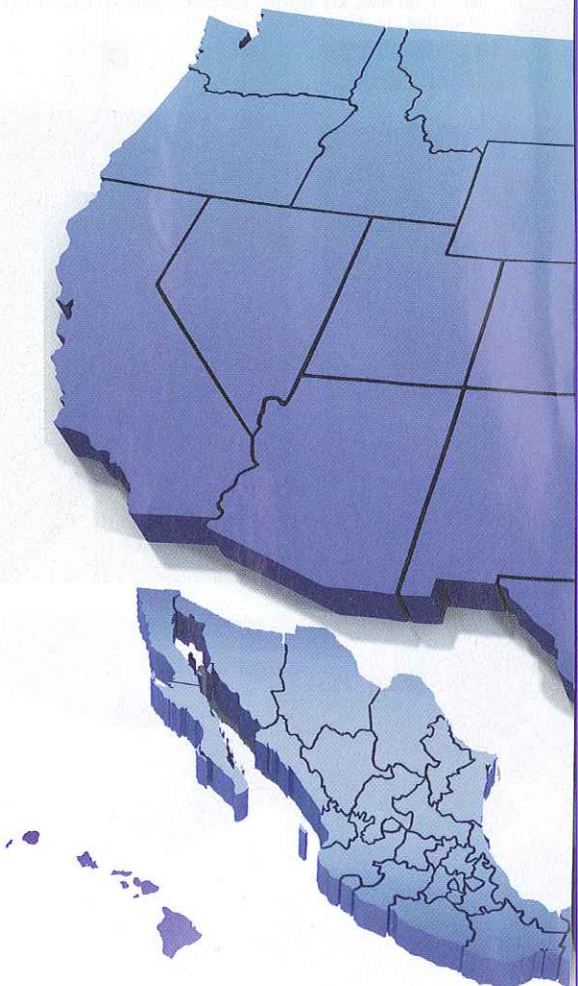
While Central Terminal B's architecture is from end-to-end a soaring success, the passenger experience isn't all about getting from curb to gate with minimal hassle. Sure to cause lingering are 12 stunning art installations commissioned as part of an \$8 million Airport Art Project funded through airport construction bonds and administered by the Sacramento Metropolitan Arts Council.

Most instantly attention-grabbing is the giant red rabbit whose 56-foot-long fiberglass body

appears to be leaping head-first from the second-floor ticket hall into a stone suitcase anchored to the baggage-claim area on the ground floor. The work by renowned artist Lawrence Argent can be interpreted in many ways, but is intended above all to elicit smiles.

At the northern end of the ticket hall, Christian Moeller's low relief wall titled "Baggage Handler" is a "bit map" work of steel and wood designed to recognize the largely invisible labor force that works behind the scenes at the airport. Passengers will be dazzled, too, by a pair of colorful, 18x12-foot floor mosaics in the transfer hall, one by Sacramento artist Suzanne Adan, the other by Joan Moment, an artist with long-time local ties.

The marquis piece in the airside terminal is 30-foot wide chandelier, titled "Acorn Steam," by Donald Lipski. Formed by the intersecting trunks of three valley oaks embellished with thousands of teardrop crystal "leaves," it hangs at the axis of the airside concourse, serving as a dramatic point of focus. Also in the airside terminal, a 10-foot, interactive sculpture of a French horn functions as an actual instrument by sounding notes transposed from a computer keyboard on which passengers are encouraged to type.





"The thing I am really proud of was the collaboration between the airport, the architects and the art program," says Shelly Willis, program director for the arts commission. "That resulted in the siting of the art work along the central spine of the terminal, where everyone can experience it. Passengers get the sense that they're walking through a gallery—they see a sculpture, then an interactive piece, then pieces on the ground. It feels like a very curated type of program. And the work is all very colorful and warm."

One thing about Sacramento International Airport that hasn't changed with the opening of Central Terminal B: It's still far less impacted by traffic and easier to use than any other major transportation hub in Northern California.

Want to know more about the airport art program? Click on the Big Build Public Art program page of the Sacramento Metropolitan Arts Commission site, [www.sacmetroarts.org](http://www.sacmetroarts.org).



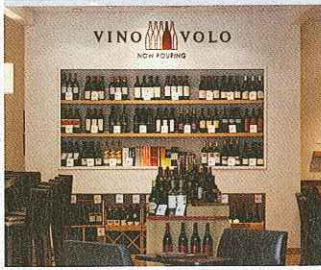
The airport's new website at [sacairports.org](http://sacairports.org) has information on ground transportation, parking and everything else you need to know to navigate the gateway to Northern California.





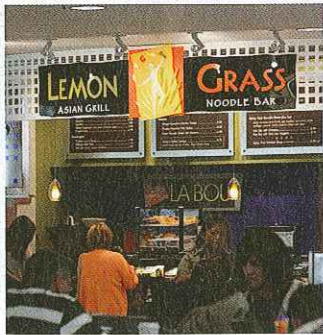
## VOLO

GREAT WINES



### AIRPORT RESTAURANTS

**Burgers and Brew**  
**Cafeteria 15L**  
**Camden Food Co**  
**Dos Coyotes**  
**EcoGrounds**  
**Esquire Grill**  
**Famous Famiglia**  
**Healthy Living**  
**Jack's Urban Eats**  
**Old Soul Co**  
**Peet's Coffee**  
**Starbucks**  
**The Gateway Bar**  
**Vino Volo - wine bar**



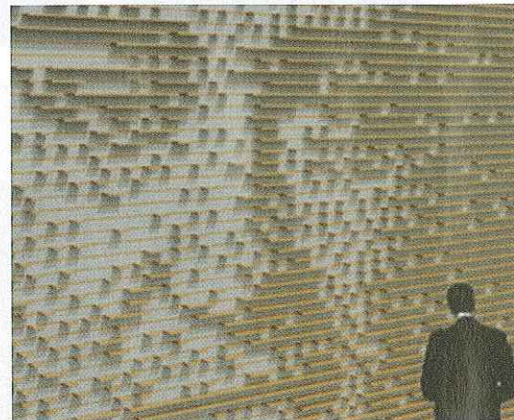
### PUBLIC ART TOURS AND BROCHURES

Upon the completion of Central Terminal B, Sacramento Metropolitan Arts Commission will produce a brochure of the Airport Art Program that includes a map of both Terminal A and B and identifies each artwork in the Airport collection.

The brochure will be available to the public both as hard copy and online. SMAC will also sponsor guided tours of the Airport Art Program and will provide information on the artists and artwork in the collection. For more information call (916) 808-3992 or go to [sacmetroarts.org](http://sacmetroarts.org).



LIVING LENSES BY PO SHU WANG AND LOUISE BERTELSEN / DESIGN FOR INTERACTIVE RECESSED FLOOR ELEMENTS / TICKET HALL



BIT WALL: BAGGAGE HANDLERS BY CHRISTIAN MOELLER / DESIGN FOR LOW RELIEF WALL SCULPTURE / BAGGAGE CLAIM



FLYING COLORS I BY SUZANNE ADAN / DESIGN FOR GLASS TESSERA MOSAIC FLOOR / TRANSFER LEVEL

### A TASTE OF SACRAMENTO

Grab a taste of Sacramento at locally branded concessions in the new Central Terminal B, or visit the parent establishments in town.

#### Airside concourse

- **Jack's Urban Eats:** Made-to-order salads and sandwiches. Visit the original at 1230 20th Street in midtown Sacramento.
- **Dos Coyotes Border Grill:** Innovative and healthy Mexican food; seven branches in the Sacramento area including one at Arden Fair Mall.
- **Cafeteria 15L:** Eclectic American comfort cuisine from owners of the popular restaurant at 1116 15th Street in midtown Sacramento.
- **Esquire Grill:** Fresh and creative American cuisine; visit the original at 1213 K Street in downtown Sacramento.
- **Burgers and Brews:** Upscale burgers and sides; three Northern California locations including one at 1409 R Street in Sacramento.

#### Landside terminal

- **Old Soul Company:** Coffee and accoutrements with ageless attitude; three locations in Sacramento including one at 812 21st Street in midtown.

### AIRLINES OPERATING AT SACRAMENTO INTERNATIONAL AIRPORT

#### Central Terminal B:

Aeromexico  
 Alaska/Horizon  
 American  
 Frontier  
 Hawaiian  
 Jet Blue  
 Southwest

#### Terminal A:

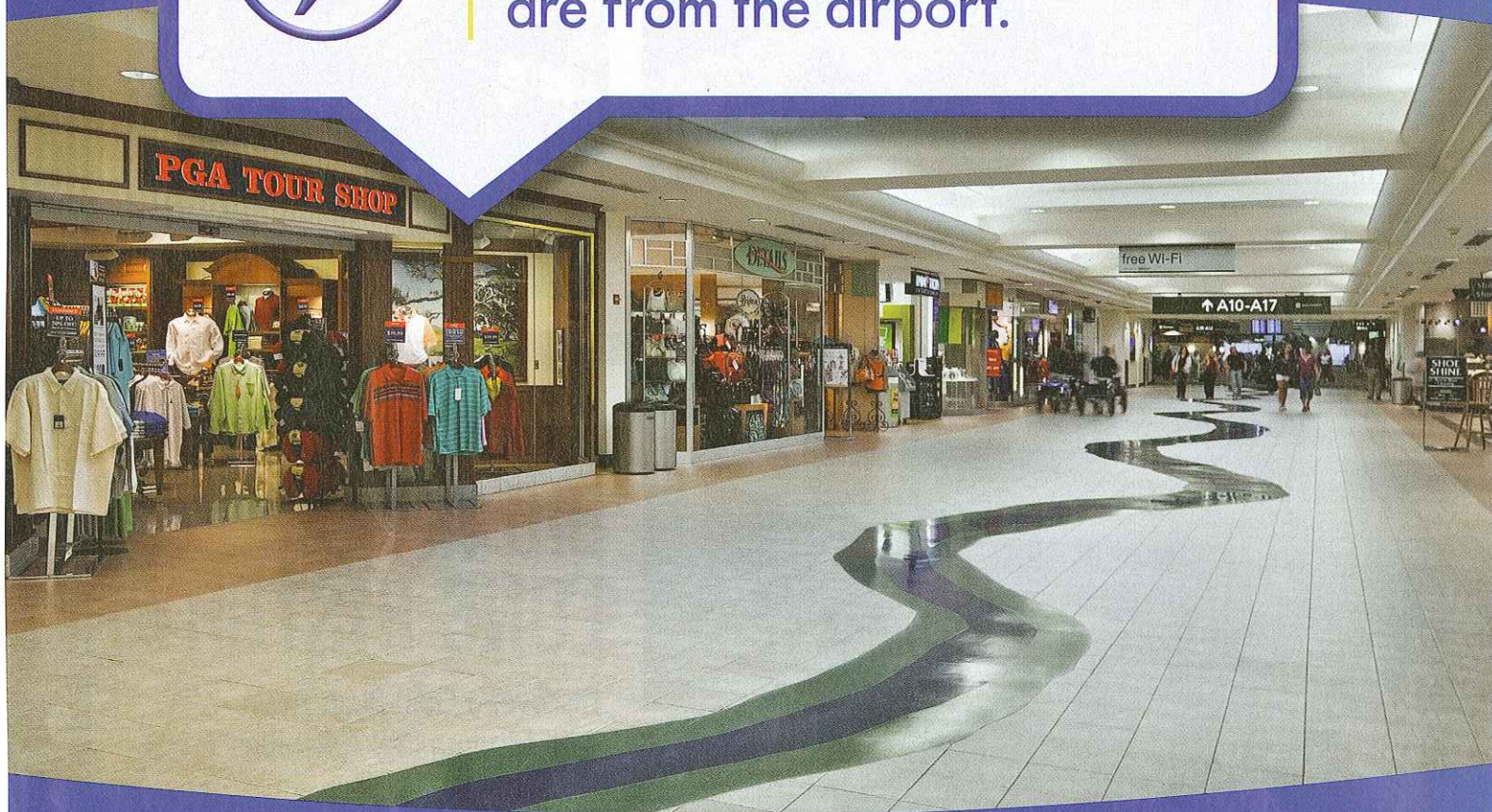
Continental  
 Delta  
 United  
 US Airways





SACRAMENTO INTERNATIONAL TRAVEL ADVISORY:

They'll never know the gifts  
are from the airport.



With over 30 enticing options for shopping, dining and other services, Terminal A at Sacramento International is a destination all its own. And opening October 6th, the new state-of-the-art Central Terminal B will offer even more reasons to arrive early and get a taste of everything the Gateway to Northern California has to offer.

#### CHECK OUT THE FOLLOWING LOCATIONS IN TERMINAL A:

##### FOOD

- Burger King
- California Pizza Kitchen
- Cinnabon/Sbarro
- Home Turf Sports Bar & Grill
- La Salsa
- LaBou
- Lemon Grass
- Quiznos
- Saladworks/Zia
- Starbucks
- Vino Volo

##### SHOPPING & SERVICES

- Bella
- Brooks Brothers
- Capitol Marketplace
- Details
- Forever Silver
- Hometown Favorites
- InMotion Entertainment
- KidsZoo
- Massage Bar
- Nelson's Books & News
- Nelson's Newsstand
- PGA Tour Shop
- Shoe Shine
- Vino Volo



SACRAMENTO INTERNATIONAL AIRPORT

The Gateway to Northern California and the World.

[SacAirports.org](http://SacAirports.org)

Find us on  
GateGuru

